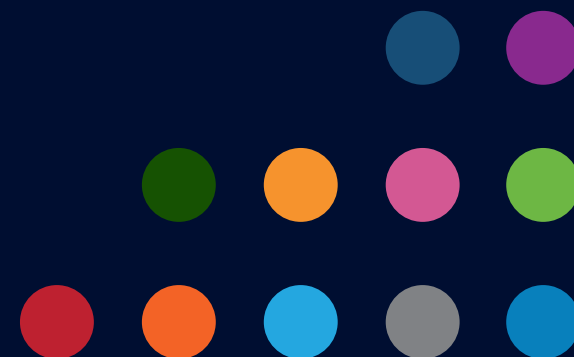




2026

Authorised Partner Price List



Important billing information

Please note that the currency in which your business will be invoiced is determined by our accounts team. This decision is based on the country in which your business is registered and complies with our internal policies and local regulations.

If you have specific currency requirements or questions about this process, please contact our support team before placing an order. We will do our best to accommodate your needs within the scope of our billing guidelines.

Orders should be emailed to orders@icrtouch.com

Tel: +44 (0)1983 646 141

United Kingdom

Payment to be made to the ICRTouch
GBP bank account with the following details:

Bank: Natwest
Sort Code: 54-10-34
Account Number: 14217481
IBAN: GB51NWBK54103414217481

Europe

Payment to be made to the ICRTouch
EUR bank account with the following details:

Name: ICRTouch (IOW) Ltd
Bank: Natwest
Account Number: 17092817
IBAN: GB59NWBK60721317092817
BIC: NWBKGB2L

Rest of the World

Payment to be made to the ICRTouch
USD bank account with the following details:

Name: ICRTouch (IOW) Ltd
Bank: Natwest
Account Number: 17092825
IBAN: GB29NWBK60730117092825
BIC: NWBKGB2L

Rental Prices

TouchPoint

Product	Product Code	GBP £	EUR €	USD \$
TouchPoint rental (HDD Licence only) (invoiced in arrears)	TOUCHPOINTRENTAL	£6.50 PCM	€7.75 PCM	\$7.75 PCM
Rental Deal 1 x TouchPoint rental licence + 1 x TouchOffice Web If you only have a single till and rent both the TouchPoint licence and TouchOffice Web then you are not restricted to the minimum till quantity	TOUCHPOINTRENTAL OFFICEWEB	£16.75 PCM	€20.00 PCM	\$20.00 PCM

TouchPoint^{lite}

Product	Product Code	GBP £	EUR €	USD \$
Includes integration with a TouchOffice Web account No minimum number of terminals required	TOUCHPOINTLITE	£10.50 PCM	€12.50 PCM	\$12.50 PCM
Pricing Examples TouchOffice Web + 1 TouchPoint lite: £10.00 total per month TouchOffice Web + 1 TouchPoint full licence terminal + 1 TouchPoint lite: £16.25 total per month TouchOffice Web + 1 TouchPoint rental licence terminal + 1 TouchPoint lite: £22.50 total per month				

PocketTouch

Product	Product Code	GBP £	EUR €	USD \$
PocketTouch rental – Tied to Check Master of a rental TouchPoint licence. Cannot be used without rental TouchPoint licence	POCKETTOUCHRENTAL	£6.50 PCM	€7.75 PCM	\$7.75 PCM

Rental licences are billed for each calendar month that the service has been used in. E.G. If started on the 29th of a month and used for 7 days, you will be billed for 2 months.

Software Licence Prices

TouchPoint

Product	Product Code	GBP £	EUR €	USD \$
TouchPoint (HDD Licence Only) 1+	TOUCHPOINT	£260.00ea	€315.00ea	\$315.00ea
TouchPoint (HDD Licence Only) 50+	TOUCHPOINT	£235.00ea	€280.00ea	\$280.00ea
Hardware dongle	DONGLETOUCHPOINT	£95.00ea	€115.00ea	\$115.00ea
Upgrades - only licence number 150,000 or newer can be upgraded	ICRTOUCH_UPGRADE-HDD ICRTOUCH_UPGRADE-USB	£205.00	€245.00	\$245.00
Migration to new hardware after 2 years of being sold	ICRTOUCHMIGRATIONOFLICENCE	£100.00	€120.00	\$120.00
Migration to new hardware prior to 2 years of being sold	N/A	Free	Free	Free
ETAL scripts	ETALSCRIPT	Quote	Quote	Quote

Additional features can be added via the ETAL scripting engine.

See the ETAL section later to see some of the off the shelf scripts available, checkout the ETAL booklet or email orders@icrtouch.com for a bespoke quote.

PocketTouch

Product	Product Code	GBP £	EUR €	USD \$
PocketTouch device licence or tied to TouchPoint check master (per order pad)	POCKETTOUCH	£155.00	€187.50	\$187.50

CollectionPoint

Product	Product Code	GBP £	EUR €	USD \$
CollectionPoint	N/A	Free	Free	Free
Custom skin	N/A	POA	POA	POA

Software Licence Prices

TouchKitchen




Product	Product Code	GBP £	EUR €	USD \$
TouchKitchen V3 tied to Check Master of a rental TouchPoint licence Single licence enables unlimited TouchKitchen devices, displaying max 13 unique displays Cannot be used without rental TouchPoint licence	TOUCHKITCHEN	£13.00 PCM Per site	€15.75 PCM Per site	\$15.75 PCM Per site

SelfService

Product	Product Code	GBP £	EUR €	USD \$
SelfService (requires TouchTakeaway)	SELFSERVICE	£155.00	€187.50	\$187.50

Subscription Service Prices



Product	Product Code	GBP £	EUR €	USD \$
TouchOffice Web (Till Connections 2-49) - minimum 2 tills	OFFICEWEB	£6.50 PCM Per till	€7.75 PCM Per till	\$7.75 PCM Per till
TouchOffice Web (Till Connections 50)	OFFICEWEB	£5.50 PCM Per till	€6.25 PCM Per till	\$6.25 PCM Per till
TouchOffice Web (Till Connections 100)	OFFICEWEB	£4.50 PCM Per till	€5.00 PCM Per till	\$5.00 PCM Per till
Custom report - per report You will be informed if your request is considered to be made up of more than 1 report	CUSTOMREPORTTOW	From £210.00	From €250.00	From \$250.00
TouchOffice Web "PLUS" Includes: TouchStock for android Customer loyalty Emailed reports Vouchers Ticketing Import facility API link	OFFICEWEBPLUS	£13.00 PCM Per alias	€15.75 PCM Per alias	\$15.75 PCM Per alias
Fourth hospitality link	FOURTHLINK	£15.00 Per site	€15.00 Per site	\$15.00 Per site
  	OFFICEWEBACCOUNTSLINK	£15.50 PCM	€18.75 PCM	\$18.75 PCM
Retain data after cancellation	OFFICEWEBARCHIVE	£10.00 PCM	€10.00 PCM	\$10.00 PCM

Subscription Service Prices

ByTable

Product	Product Code	GBP £	EUR €	USD \$
ByTable (requires TouchOffice Web) (Sales in a month - billing later)	TAKEAWAY	£13.00 PCM Per site	€15.75 PCM Per site	\$15.75 PCM Per site
Add postcode lookup (UK)	POSTCODE	From £6.50 PCM Per site	From €7.75 PCM Per site	From \$7.75 PCM Per site
App in both stores (Apple/Android) this applies to all mobile apps ordered after 01/04/2025 Existing apps will transition to a monthly billing model starting from 01/01/2027 Per alias	STOREAPPS	£15.50 PCM Min 12 months	€18.75 PCM Min 12 months	\$18.75 PCM Min 12 months

TouchReservation

Product	Product Code	GBP £	EUR €	USD \$
TouchReservation	TOUCHRESERVATION	Free with TOW	Free with TOW	Free with TOW

TouchMenu

Product	Product Code	GBP £	EUR €	USD \$
TouchMenu	TOUCHMENU	Free	Free	Free

TouchStock

Product	Product Code	GBP £	EUR €	USD \$
TouchStock android software - use with TouchOffice Web (no hardware) Part of TouchOffice Web "PLUS" addon	OFFICEWEBPLUS	Included with TouchOffice Web+	Included with TouchOffice Web+	Included with TouchOffice Web+

Subscription Service Prices

Postcode Database

(Royal Mail - UK only)

Product	Product Code	GBP £	EUR €	USD \$
Postcode database rolling contract—low use (limit to 400 lookups per month) Requires internet	POSTCODE	£6.50 PCM Per site	€7.75 PCM Per site	\$7.75 PCM Per site
Postcode database rolling contract—high use	POSTCODE	£18.75 PCM Per site	€18.75 PCM Per site	\$18.75 PCM Per site

Website Design

(For Partner's own website)

Product	Product Code	GBP £	EUR €	USD \$
Website design/hosting Includes website hosting but does not include the domain registration Example of a website: allianceipos.com ventureepos.com gmhcashregisters.co.uk ecr-tech.co.uk	WEBSITEDESIGN	£190.00 billed annually at go-live	€225.00 billed annually at go-live	\$225.00 billed annually at go-live

Webshop Integration – Priced Per Site

(To TouchPoint)

Product	Product Code	GBP £	EUR €	USD \$
WooCommerce link	WEBSHOP	£13.00 PCM	€15.75 PCM	\$15.75 PCM
Opencart link	WEBSHOP	£12.50 PCM	€15.00 PCM	\$15.00 PCM

ETAL Script

Product	Product Code	GBP £	EUR €	USD \$
ETAL	ETALSCRIPT	Quote	Quote	Quote
Application development	N/A	Quote	Quote	Quote
Custom skin	N/A	From £260.00	From €315.00	From \$315.00
Bespoke voucher development for TouchOfficeWeb+	CUSTOMREPORTTOW	From £52.50	From €62.50	From \$62.50
Bespoke shelf edge or stock label	CUSTOMREPORTTOW	From £52.50	From €62.50	From \$62.50
Hotel posting interface - Rezlynx	Rezlynx	£315.00 Per site	€375.00 Per site	\$375.00 Per site

Popular Scripts

(Off the shelf)

Product	GBP £	EUR €	USD \$
Smoothie printing (print ingredients onto labels)	£105.00 Per site	€125.00 Per site	\$125.00 Per site
Timed PLU (snooker script)	£52.50 Per site	€62.50 Per site	\$62.50 Per site
A4 printing (A4 receipt printing)	Free	Free	Free
Interval orders (pre-order drinks)	£105.00 Per site	€125.00 Per site	\$125.00 Per site
Interval drinks networked shelf planning	£155.00 Per site	€187.50 Per site	\$187.50 Per site
Brulines idraught (dispense file upload)	£105.00 Per site	€125.00 Per site	\$125.00 Per site
Postcode lookup / directions	£52.50 Per site	€62.50 Per site	\$62.50 Per site
Ticket on demand (staff drink ticket)	£52.50 Per site	€62.50 Per site	\$62.50 Per site
Shelf edge labels to windows printer	£52.50 Per site	€62.50 Per site	\$62.50 Per site
Loyalty price shift or discount shift happy hour	£52.50 Per site	€62.50 Per site	\$62.50 Per site
Customer loyalty last order reorder	£52.50 Per site	€62.50 Per site	\$62.50 Per site
Email receipts	£52.50 Per site	€62.50 Per site	\$62.50 Per site
Custom card handler script	£52.50 Per site	€62.50 Per site	\$62.50 Per site

See the ETAL Scripts Features & Add-Ons Brochure for more information: forum.icrtouch.com/files/category/8-et-al-scripts/

Miscellaneous Hardware Prices

Product	Product Code	GBP £	EUR €	USD \$
Bump Bar Preconfigured for TouchKitchen Compatible with Android and Windows devices with USB connection	BUMPBAR	£140.00	€170.00	N/A
Digital persona fingerprint reader	USBFINGERPRINT	£110.00	€135.00	N/A
Proximity reader standard (MiFare) 13.56 MHz	PROXIMITYREADERMIFARE	£130.00 (pre-configured for TouchPoint)	€155.00 (pre-configured for TouchPoint)	N/A
Proximity reader plus 13.56 MHz & 125kHz	PROXIMITYREADERPLUS	£205.00 (pre-configured for TouchPoint)	€245.00 (pre-configured for TouchPoint)	N/A
Kitchen printer (KP) buzzer	KPBUZZER	£10.25	€12.50	N/A

Card Payment Providers

DOJO

Product	Product Code	GBP £	EUR €	USD \$
Dojo integrated EFT Pay@Table Countertop/retail Contact Dojo Partnership Team	N/A	N/A	N/A	N/A



Product	Product Code	GBP £	EUR €	USD \$
Service (Per card terminal) 3 month cancellation period applies Price does not include hardware (purchase or rental see below)	SAGEPAYEFT	£15.50 PCM	€18.75 PCM	N/A
Initial Setup (per PED)	SAGESETUP	£77.50	€93.50	N/A
Elavon Merchant account available upon request	N/A	Bespoke Elavon Rate	Bespoke Elavon Rate	N/A



Product	Product Code	GBP £	EUR €	USD \$
Barclaycard integrated EFT Countertop/Retail USB or wireless options Email the completed Barclaycard order form to: orders@icrtouch.com Do not contact Barclaycard direct	N/A	N/A	N/A	N/A

Card Printing Services

Product	Product Code	GBP £	EUR €	USD \$
Card pricing Mono print on colour cards Full colour card printing Card encoding Double sided printing Proximity card printing Cards with signature strips	MAGCARD	Quote	Quote	N/A
Setup full colour	MAGCARDSETUP	£57.50	€69.00	N/A
Setup mono image	MAGCARDSETUP	£36.50	€44.00	N/A
Mono print on white card 1-49	MAGCARD	£1.15 Per card	€1.35 Per card	N/A
Mono print on white card 50-499	MAGCARD	£0.52 Per card	€0.63 Per card	N/A
Mono print on white card 500+	MAGCARD	£0.47 Per card	€0.58 Per card	N/A
Mono print on colour card 1-49	MAGCARD	£1.40 Per card	€1.67 Per card	N/A
Mono print on colour card 50-499	MAGCARD	£0.63 Per card	€0.78 Per card	N/A
Mono print on colour card 500+	MAGCARD	£0.58 Per card	€0.73 Per card	N/A
Colour image on white card 1-49	MAGCARD	£1.70 Per card	€2.10 Per card	N/A
Colour image on white card 50-499	MAGCARD	£0.95 Per card	€1.15 Per card	N/A
Colour image on white card 500+	MAGCARD	£0.85 Per card	€0.99 Per card	N/A

Printed Manuals

Product	Product Code	GBP £	EUR €	USD \$
How To Spot Fraud Guide	MANUALSPOTFRAUDPK10	£10.00 pack of 10	€12.00 pack of 10	\$12.00 pack of 10
	MANUALSPOTFRAUDPK5	£5.00 pack of 5	€6.00 pack of 5	\$6.00 pack of 5

